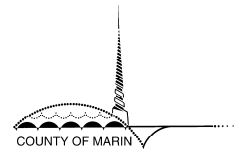


# Ross Valley Flood Protection and Watershed Program

## SAN ANSELMO FLOOD RISK REDUCTION PROJECT

(FORMERLY THE MEMORIAL PARK DUAL-USE DETENTION BASIN PROJECT)



Last Updated: October 24, 2016



High creek flows at Broadmoor Ave. bridge 12/11/14



High creek flows at downtown San Anselmo 12/11/14



High creek flows at Fairfax Town Hall 12/11/14

## About the Project

The original proposed project would have modified Memorial Park, an eight acre public park in San Anselmo, to a dual use facility allowing the park to function as a temporary overflow floodwater storage basin during infrequent, large flood events. The project was awarded a State of California Department of Water Resources (DWR) grant in the amount of \$8,720,500 due to its multiple benefits relating to flood risk reduction, environmental enhancement, and recreational facilities.

An initiative on the November 2015 ballot changed the Town's General Plan to disallow Memorial Park to be used as a floodwater storage basin. In response to the initiative passage, a technical memorandum dated April 12, 2016 identified project replacement alternatives that may meet DWR's eligibility requirements for the awarded grant. To be eligible, the replacement project must exhibit comparable, but not necessarily exact, benefits as the Memorial Park Project.

## Project Benefits

The project(s) will alleviate flood impacts and enhance public safety during a 100 year flood event, enhance the environment, and provide recreational opportunities.

## Project Status

The technical memorandum entitled "[Analysis of Project Alternatives for DWR Grant](#)" identifies four project replacement alternatives. They are:

- Brookside Detention Basin, replace Morningside Bridge, and Sleepy Hollow Creek Improvements.
- Nursery Site Detention Basin, remove Building Bridge #2, and Corte Madera Creek Improvements.
- Lefty Gomez Detention Basin and Sleepy Hollow Creek Improvements.
- Replace Sir Francis Drake Blvd. Bridge in Ross and Corte Madera Creek Improvements.

Community meetings are planned in November 2016 and February 2017 to receive public input on the preferred replacement project which will receive the DWR grant funds.

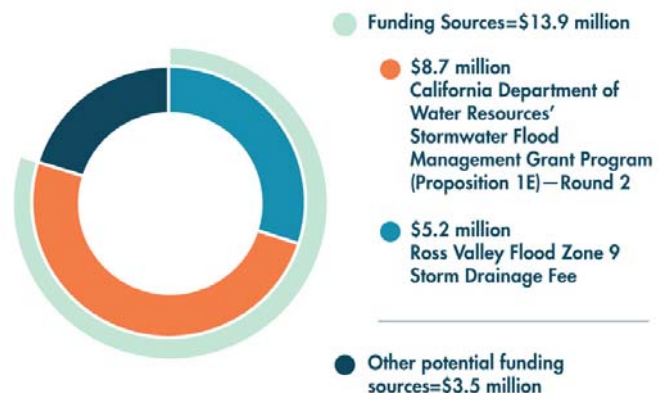
## Implementing Agency & Partners

The Marin County Flood Control and Water Conservation District is the implementing agency with support from the Town of San Anselmo. The contact is Russ Eberwein, P.E., Marin County Flood Control and Water Conservation District Senior Civil Engineer (reberwein@marincounty.org).

## Project Cost & Funding Sources

Proposed Project Estimated Cost=\$17.4 million

(per the Department of Water Resources Prop. 1E Grant Application, dated September 20, 2013)



# Ross Valley Flood Protection and Watershed Program



Creeks of the Ross Valley Watershed



Flooding on Larkspur Plaza Drive, 1998

Requests for accommodations may be made by calling (415) 473-4381 (Voice/TTY) or 711 for the California Relay Service or by email at [disabilityaccess@marincounty.org](mailto:disabilityaccess@marincounty.org).

Copies of documents are available in alternative formats, upon request.

## ABOUT THE ROSS VALLEY FLOOD PROTECTION & WATERSHED PROGRAM

The Marin County Flood Control and Water Conservation District and the towns/cities of Fairfax, San Anselmo, Ross, and Larkspur created the Ross Valley Flood Protection and Watershed Program (Program) after the devastating flood of 2005. The Program addresses issues of flooding and environmental stewardship to protect and enhance the Ross Valley watershed and its communities. The goals of the program are to reduce the risk of flooding using a watershed-wide approach; integrate environmental restoration features with the flood mitigation projects; and leverage funds obtained through the Ross Valley Storm Drainage Fee to secure state and federal grant funding to study and construct flooding protection projects. The proposed bridge replacement, detention basin, and in-creek projects are part of the first phase of improving the level of flood protection in the Ross Valley.



Downtown San Anselmo (Bolinas Avenue) during the 1944 Flood



Downtown San Anselmo (Bolinas Avenue) during the 2005 Flood

For further information about the Program and proposed projects, please visit the Program website at [www.RossValleyWatershed.org](http://www.RossValleyWatershed.org).

