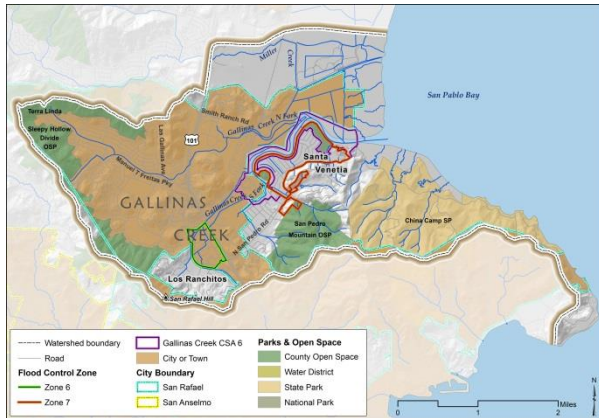


# GALLINAS WATERSHED PROGRAM



## WHAT IS THE GALLINAS WATERSHED PROGRAM?

The Gallinas Flood Protection and Watershed Program is one of several initiatives under the Marin County Watershed Program, which was approved by the Marin County Board of Supervisors in May 2008.

The goal of the Watershed Program is to develop a framework that integrates flood protection, creek and wetland restoration, fish passage and water quality improvements with public and private partners to protect

and enhance Marin's watersheds. The countywide program has focused on creating the Watershed Program website, producing watershed descriptions and existing conditions reports, and creating a series of maps for each watershed in Marin County.

The Gallinas Watershed Program provides a system-wide analysis of flood protection options and identify specific opportunities to integrate flood protection goals with creek and wetland restoration elements. This process includes evaluating alternatives that would reduce flood protection maintenance costs and impacts and be resilient to sea level rise.

## WHAT ARE THE PROGRAM'S DELIVERABLES?

Deliverables include:

- Scientific and technical studies
- A suite of project alternatives for potential implementation
- Mapping and database development
- Community outreach

Details on the studies can be found on the next page.

All program documents are posted to the Program website as they are completed.



## WHO ARE THE PROGRAM PARTNERS?

The Gallinas Watershed Program is a partnership of:

- County of Marin
- Flood Control Zone 6
- Flood Control Zone 7
- County Service Area 6
- Las Gallinas Valley Sanitary District
- City of San Rafael

Funding is provided by the program partners.

## WHAT IS THE PUBLIC'S ROLE?



**Stay informed!** We need the public's input on possible solutions.

Join our email list (links are on the website) to receive updates on the Gallinas Watershed Program's products and notifications of community meetings.

Gallinas Watershed Program page:

[http://www.marinwatersheds.org/gallinas\\_creek\\_flood\\_protection.html](http://www.marinwatersheds.org/gallinas_creek_flood_protection.html)

# GALLINAS WATERSHED PROGRAM

## WHAT SCIENTIFIC STUDIES ARE BEING PRODUCED?

### Las Gallinas Levee Evaluation

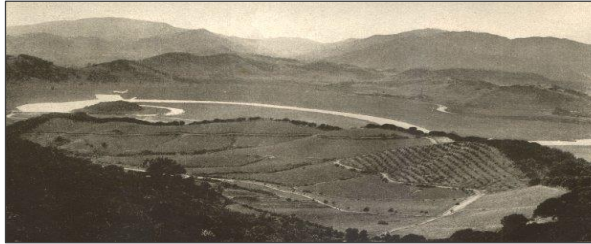
The Evaluation was a significant multi-year effort to better understand the current condition of the levees and floodwalls in Santa Venetia and determine potential alternatives to reduce impacts from flooding, including rebuilding an improved earthen levee, adding concrete floodwalls to the existing levees, installing sheet piles, and continuing to maintain the existing redwood floodwalls.

### Santa Venetia Interior Drainage Study

The Study evaluated the current level of flood protection within Flood Control Zone No. 7, identified vulnerabilities in the current drainage system within Santa Venetia, and developed a range of practical and self-mitigating modifications to the drainage and pumping flood management system in order to improve the level of flood protection and increase the cost-effectiveness of the system. The models continue to be used for planning projects in Santa Venetia.

### Lower Gallinas Creek Sea Level Rise Vulnerability Assessment

The Assessment provides a high level evaluation of the impacts of direct bay coastal flooding between the San Pablo shoreline and Highway 101. It quantified possible tidal flooding impacts to homes, businesses, and roads under three sea level rise scenarios and identified the locations and lengths of vulnerable low lying barriers along the Gallinas Creek frontage that might allow tidal floodwaters to reach homes and businesses.



### Gallinas Creek Geomorphic Dredge Assessment

Lower Gallinas Creek has been dredged four times since the 1960's to provide recreational access. Costs to dredge have risen faster than the funds to pay for it. This Assessment identified a new type of geomorphic dredge that creates a creek with dimensions closer to what would be naturally occurring and that works with natural processes.

### McInnis Marsh Restoration Feasibility Study

The Study evaluated actions to restore bayland, tidal, freshwater, and upland habitat and to increase resiliency to sea level rise. Dredged sediment could be re-used in the restoration. Restoration could increase tidal prism and increase resiliency to sea level rise.

### Upper Gallinas Creek Restoration Opportunities Assessment

This Assessment was done in partnership with the City of San Rafael. Built in the 1950's, the concrete channel in Terra Linda is nearing the end of its design life. Can the channel be restored to a more natural condition, with native riparian plantings, and can a greenway be added to enhance recreational opportunities?

## WHERE CAN I FIND MORE INFORMATION?

The Watershed Program website contains a wealth of information:

Main Page:

<http://www.marinwatersheds.org>

Gallinas Watershed Program page:

[http://www.marinwatersheds.org/gallinas\\_creek\\_flood\\_protection.html](http://www.marinwatersheds.org/gallinas_creek_flood_protection.html)

The Gallinas Watershed Program **Work Plan** provides a detailed description of the program partners, deliverables, timelines, and budgets. It is available on the Gallinas Watershed Program webpage (<http://www.marinwatersheds.org/documents/2013.12.20DRAFTLasGallinasSummary.pdf>)

You may also contact:

Laurie Williams

Senior Watershed Planner

415-473-4301

[llwilliams@marincounty.org](mailto:llwilliams@marincounty.org)



Gallinas Watershed Program page:

[http://www.marinwatersheds.org/gallinas\\_creek\\_flood\\_protection.html](http://www.marinwatersheds.org/gallinas_creek_flood_protection.html)