

November 1, 2016 through March 1, 2017 Storm Update



Photo: College of Marin, Tue 2/7/17, 9:42 AM (From pedestrian bridge, looking downstream)

ROSS VALLEY WATERSHED FLOOD RISK REDUCTION PROGRAM
PRESENTATION TO FLOOD CONTROL ZONE 9 ADVISORY BOARD
MARCH 21, 2017



Ross Valley Watershed Flood Risk Reduction Program
RossValleyWatershed.org

Rainfall Comparison

KENTFIELD RAINFALL OCTOBER 1 – MARCH (DATA: NWS)

	05/06 Actuals (New Year's Eve Flood)	15/16 Actuals	16/17 Actuals
Rainfall Accumulation	43.9" *	23.9" **	69.5"
1-month peak	28.6" (Dec 2005)	14.0" (Jan 2016)	23.6" (Jan 2017)

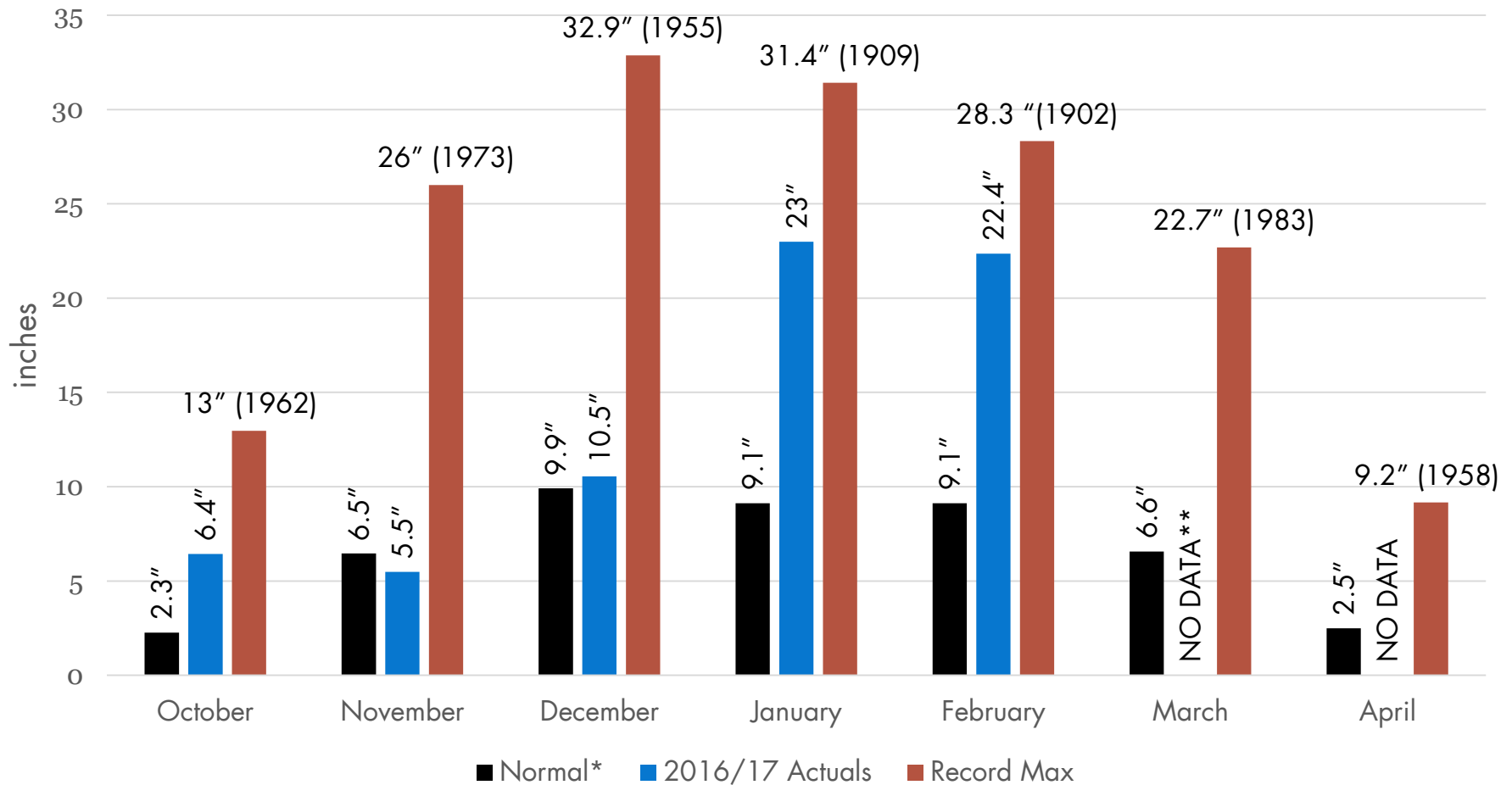
*Total 05/06 Water Year Rainfall Accumulation at Kentfield from Oct 1, 2005 to Sept 30, 2006 was 66.2"

**Total 15/16 Water Year Rainfall Accumulation at Kentfield from Oct 1, 2015 to Sept 30, 2016 was 36.9"



Historic Rainfall Records, Kentfield

PRECIPITATION GRAPH FOR KENTFIELD (DATA: NWS, MARIN.ONERAIN.COM)

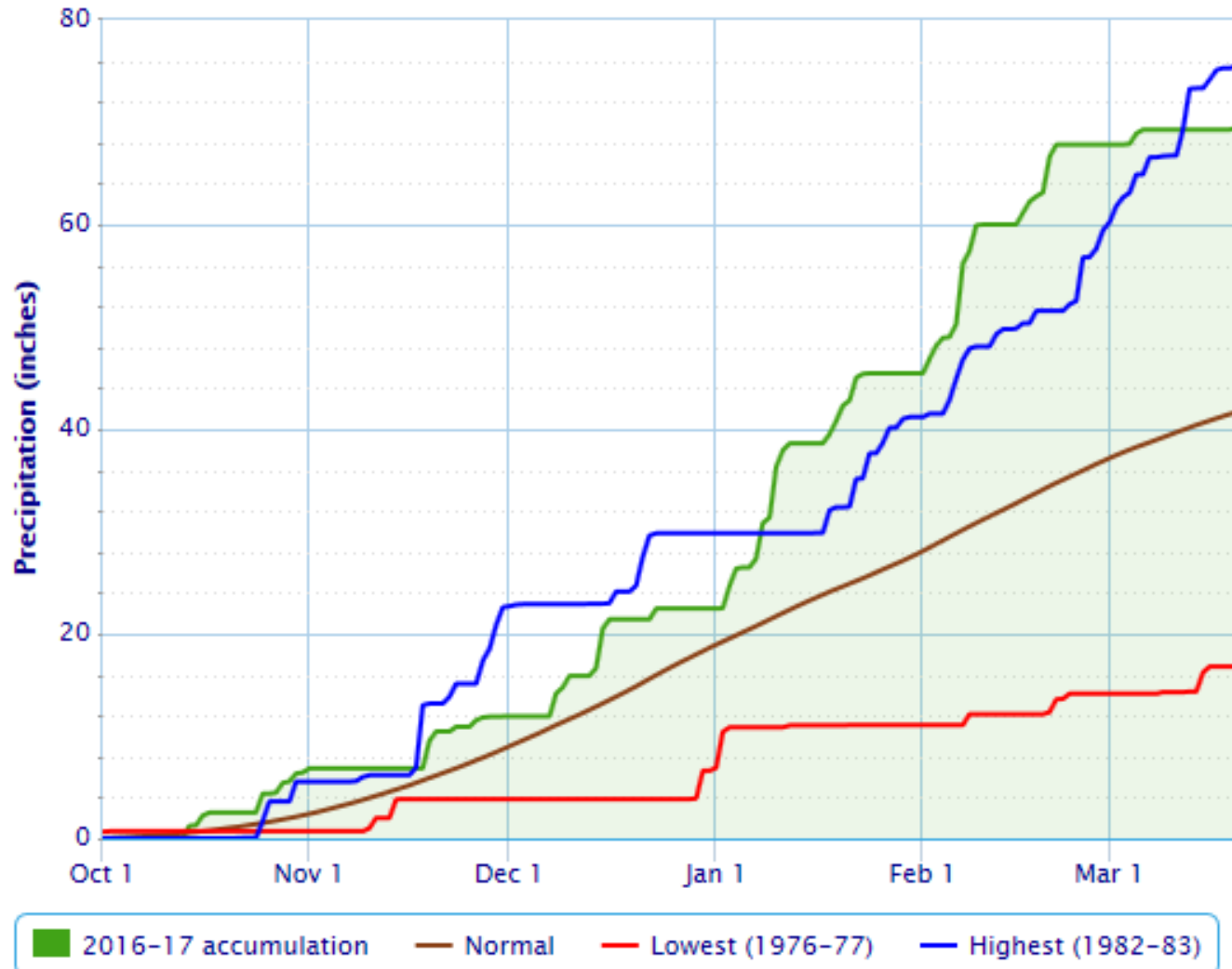


*Normal monthly Kentfield climate data (NWS, 1981-2010)

**3/1/17 to 3/21/17 (7:22 AM) Rainfall To Date = 3.9"

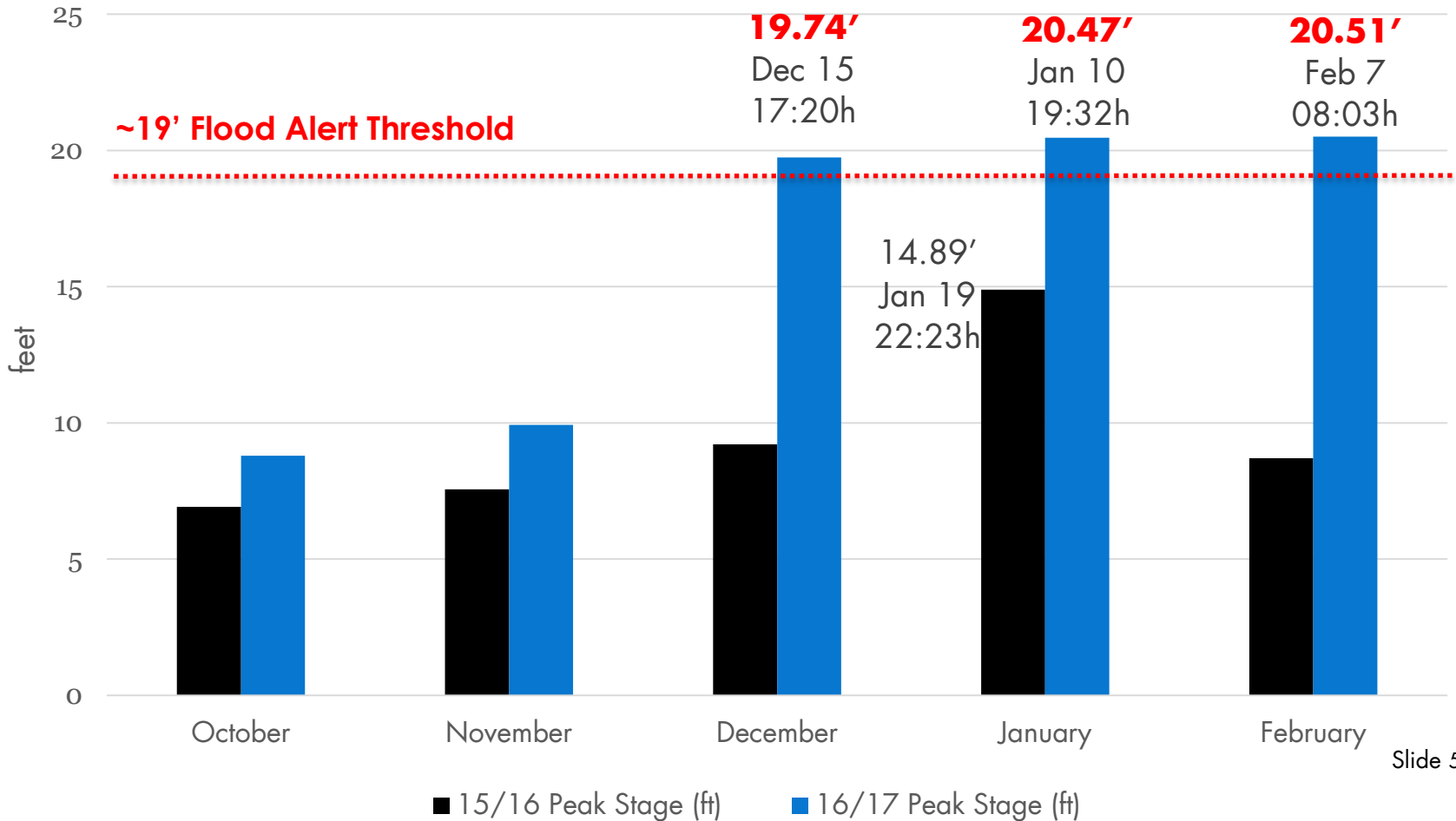
Historic Rainfall Accumulation Records, Kentfield

(DATA: NW)



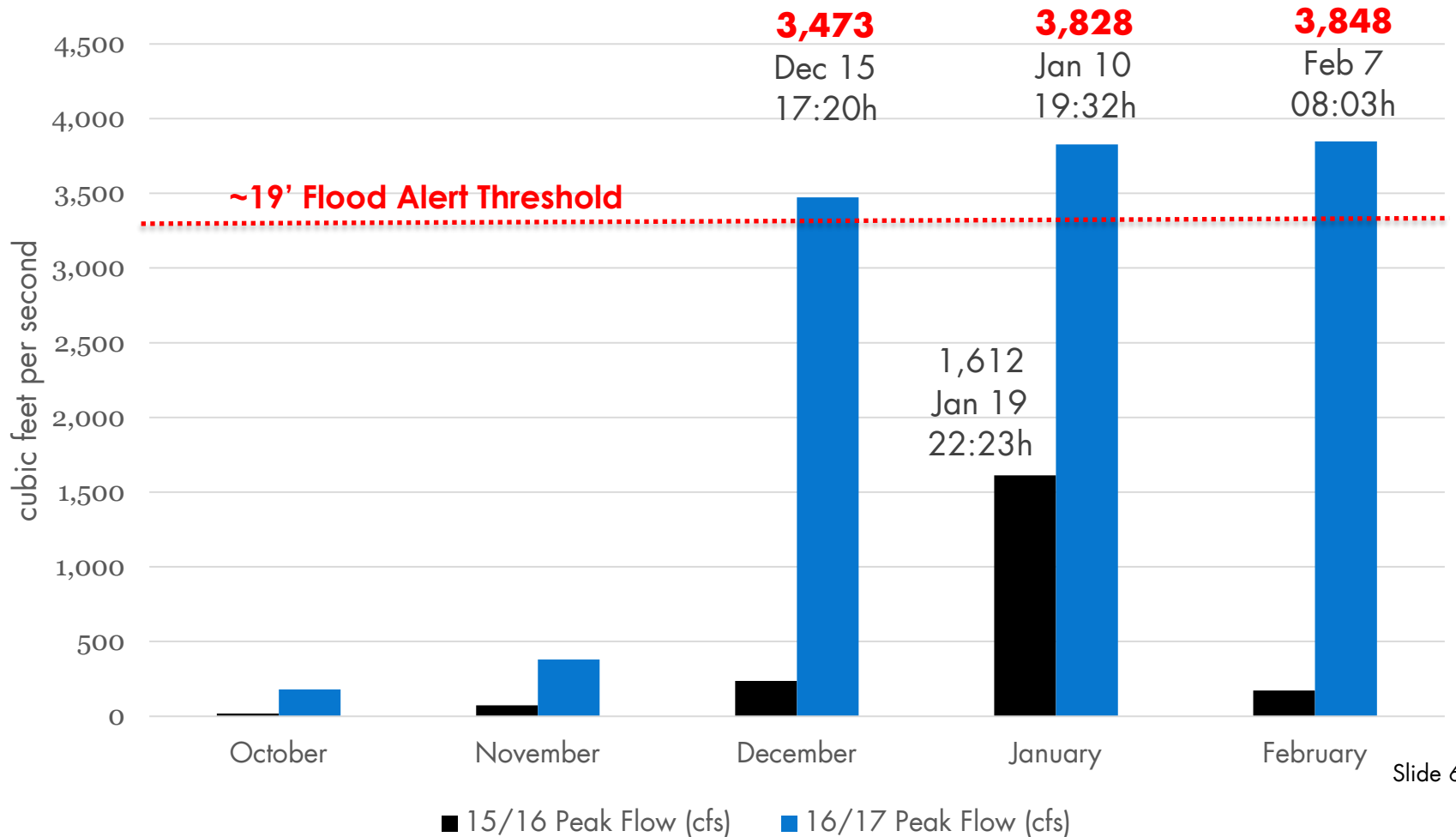
Peak Stage Compared to Last Year

STAGE DATA AT CORTE MADERA CREEK, ROSS MARIN.ONERAIN.COM)



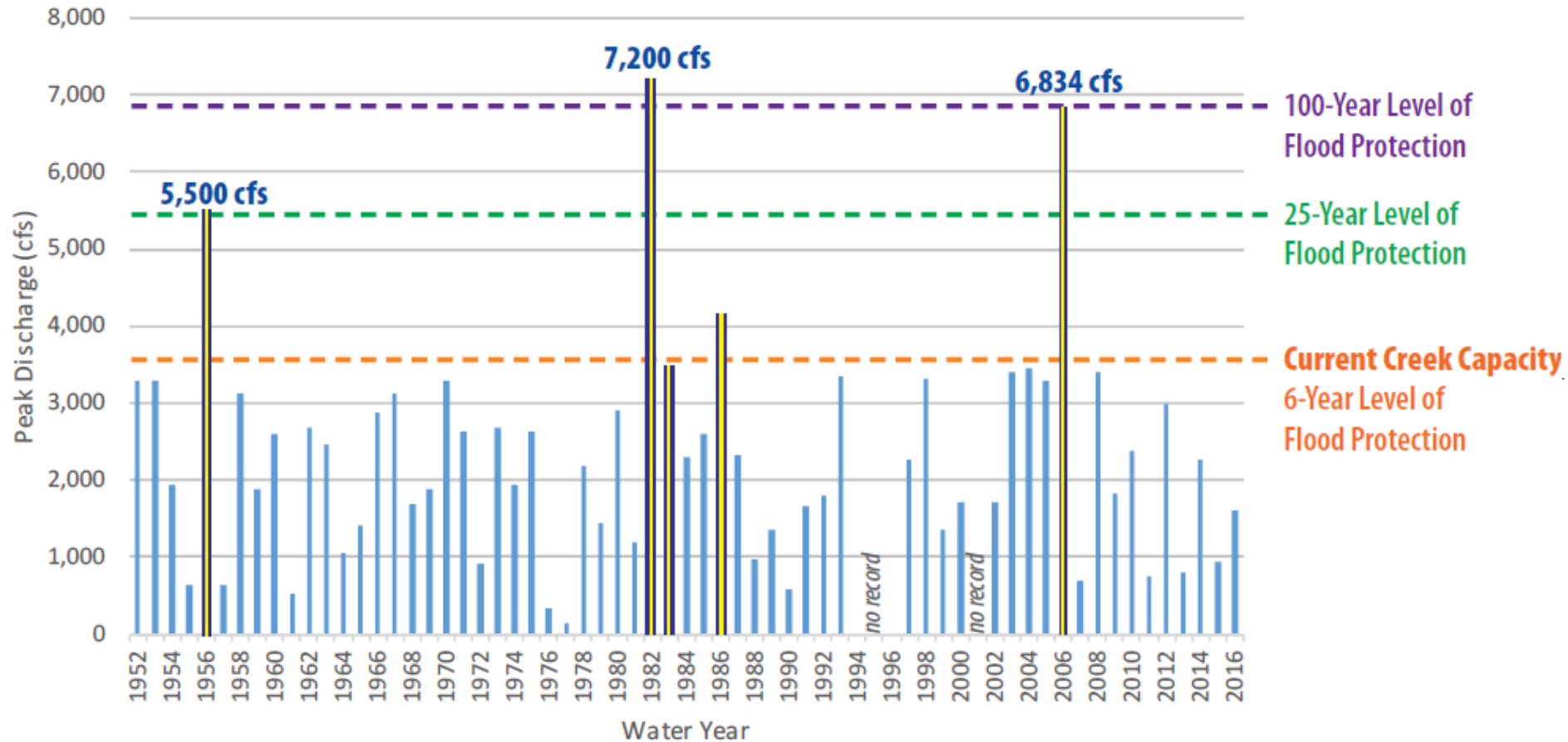
Peak Flow Compared to Last Year

PEAK FLOW DATA AT CORTE MADERA CREEK, ROSS (DATA: MARIN.ONERAIN.COM)



Peak Discharges at Ross Creek Gage

1952-2016



Peak Discharges at Ross Creek Gage

2016-2017

